

Biotinylated Human Serum Albumin Protein

Cat. No. BSA-HM401B

Description

Source	Recombinant Biotinylated Human Serum Albumin Protein is expressed from HEK293 with His tag and Avi tag at the C-Terminus. It contains Asp25-Leu609.
Accession	P02768-1
Molecular Weight	The protein has a predicted MW of 69.4 kDa. Due to glycosylation, the protein migrates to 69-70 kDa based on Bis-Tris PAGE result.
Endotoxin	Less than 1 EU per μg by the LAL method.
Purity	>95% as determined by Bis-Tris PAGE >95% as determined by HPLC

Formulation and Storage

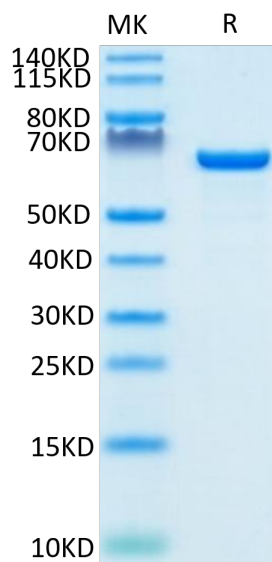
Formulation	Lyophilized from 0.22 μm filtered solution in PBS (pH 7.4). Normally 8% trehalose is added as protectant before lyophilization.
Reconstitution	Centrifuge the tube before opening. Reconstituting to a concentration more than 100 $\mu\text{g}/\text{ml}$ is recommended. Dissolve the lyophilized protein in distilled water.
Storage	-20 to -80°C for 12 months as supplied from date of receipt. -80°C for 3 months after reconstitution. Recommend to aliquot the protein into smaller quantities for optimal storage. Please minimize freeze-thaw cycles.

Background

Human serum albumin (HSA), the most prominent protein in plasma, binds different classes of ligands at multiple sites. HSA provides a depot for many compounds, affects pharmacokinetics of many drugs, holds some ligands in a strained orientation providing their metabolic modification, renders potential toxins harmless transporting them to disposal sites, accounts for most of the antioxidant capacity of human serum, and acts as a NO-carrier.

Assay Data

Bis-Tris PAGE



Biotinylated Human Serum Albumin on Bis-Tris PAGE under reduced condition. The purity is greater than 95%.

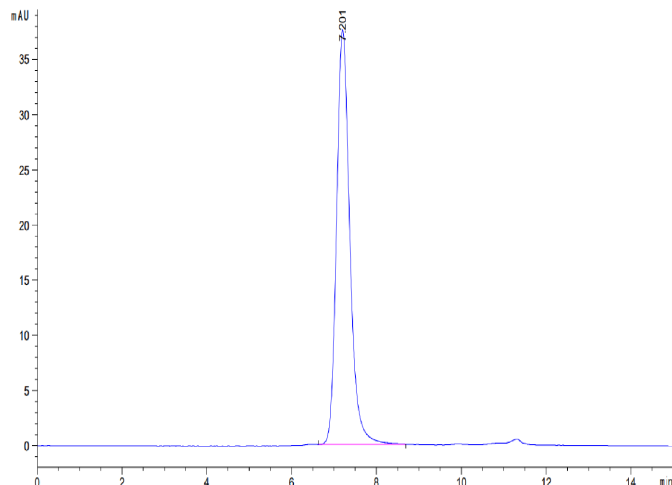
SEC-HPLC

Biotinylated Human Serum Albumin Protein

Cat. No. BSA-HM401B

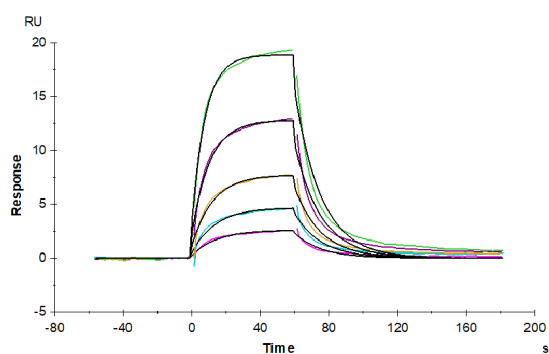


Assay Data



The purity of Biotinylated Human Serum Albumin is greater than 95% as determined by SEC-HPLC.

SPR Data



Biotinylated Human Serum Albumin, His-Avi Tag immobilized on CM5 Chip can bind Human FcRn, His Tag with an affinity constant of $1.67 \mu\text{M}$ as determined in SPR assay (Biacore T200).